

# LIVESTOCK REPRODUCTION

AgCareers.com developed career profiles for high demand jobs in the agricultural industry. These career profiles are a helpful resource for students and job seekers to explore new roles in the industry, as well as for career educators.

## Artificial Insemination Technician

### JOB OVERVIEW

**Inseminate animals** with semen to assist impregnation in the breeding of livestock species

**Store, travel with, thaw & prepare** semen for insemination

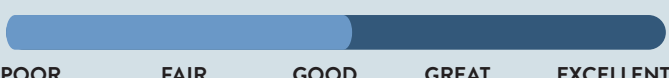
**Promote new & current products** or services to customers

**Offer reproductive consultation** & perform pregnancy checks on animals

**Keep accurate records** of services



### JOB OUTLOOK



### EDUCATION NEEDED

High school diploma & A.I. certification; degree in animal science beneficial

### RECOMMENDED H.S. COURSES

Ag education, biology, anatomy, animal science, mathematics

### TYPICAL EMPLOYERS

Most are self-employed but some vertically integrated companies hire A.I. technicians as well as animal stud businesses

## Breeding/Multiplication Manager

### JOB OVERVIEW

**Oversee the welfare**, feeding, monitoring, record-keeping, and management of breeding animals

**Monitor & assist mother animals** during births & C-sections

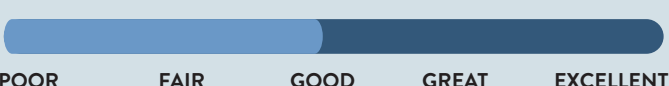
**Oversee health of all animals**

**Manage weaning & nursery processes** like tail cutting, ruptures, castration, tattooing, etc.

**Oversee maintenance** including ventilation, heating, etc.



### JOB OUTLOOK



### EDUCATION NEEDED

High school diploma; associate's degree in agribusiness or animal science preferred

### RECOMMENDED H.S. COURSES

Ag education, biology, anatomy, computer courses, mathematics

### TYPICAL EMPLOYERS

Livestock companies and large farms

## Poultry Hatchery Manager

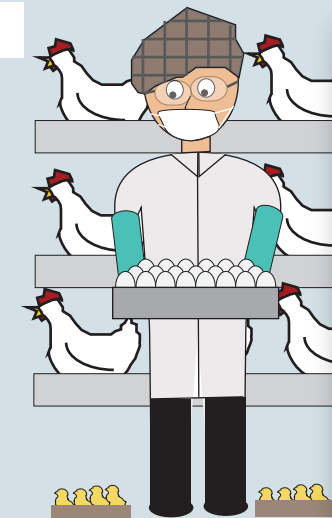
### JOB OVERVIEW

**Oversee all aspects** of a poultry hatchery including personnel management, egg management & equipment

**Manage hatchery activities** like egg pick-up & delivery, care, incubation, hatching, grading, vaccination, & movement of chicks

**Oversee quality assurance**, control & sanitation

**Plan & oversee** hatchery budget & scheduling



### JOB OUTLOOK



### EDUCATION NEEDED

Associates or Bachelor's degree in animal or poultry science

### RECOMMENDED H.S. COURSES

Ag education, animal science, biology, English, mathematics, chemistry

### TYPICAL EMPLOYERS

Poultry production companies that are vertically integrated or companies servicing smaller poultry operations

## Sow Farm Worker/Manager

### JOB OVERVIEW

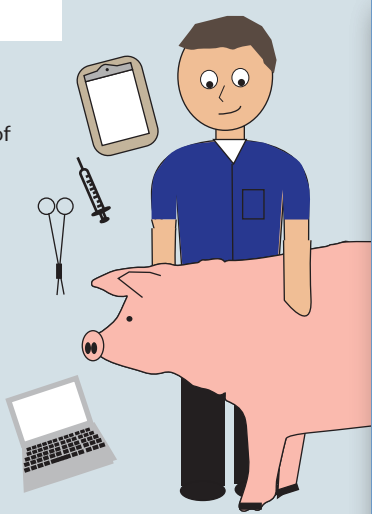
**Oversee all management aspects** of a sow farm where adult female hogs are housed to birth piglets

**Manage & train staff & communicate** with key personnel like veterinarians

**Assist with the breeding** of sows, gestation & farrowing of pigs

**Manage feed & medication** inventory & supply

**Ensure cleanliness** & sanitation



### JOB OUTLOOK



### EDUCATION NEEDED

Associate's or Bachelor's degree in animal science or husbandry, swine science or management

### RECOMMENDED H.S. COURSES

Ag education, animal science, biology, chemistry, mathematics

### TYPICAL EMPLOYERS

Swine farmers or swine companies that own/contract their pigs

## Swine Nursery Worker/Manager

### JOB OVERVIEW

**Oversee health of newly weaned** piglets to ensure optimal growth

**Maintain barn temperature & ventilation** equipment

**Prepare feed formulations** to meet the changing nutritional needs of piglets

**Perform pen management**, culling, sorting, humane euthanasia & safety procedures

**Ensure proper usage of medication**



### JOB OUTLOOK



### EDUCATION NEEDED

High school diploma; Associate's or Bachelor's in animal science or swine management preferred

### RECOMMENDED H.S. COURSES

Ag education, animal science, biology, chemistry, mathematics

### TYPICAL EMPLOYERS

Swine production farms who house & produce swine for processing; swine nurseries

PROFESSIONALS IN LIVESTOCK REPRODUCTION CAN EXPECT TO EARN  
AN AVERAGE OF \$40,600 PER YEAR