

ANIMAL PRODUCTION

AgCareers.com has identified high demand jobs in the agricultural industry. These career profiles are a helpful resource for students and job seekers to explore new roles in the industry, as well as for career educators.

Apiarist / Beekeeper

JOB OVERVIEW

Manage colonies of honeybees for the production of honey as well as for pollination services

Ensure sufficient food reserves and that breeding yards are optimal

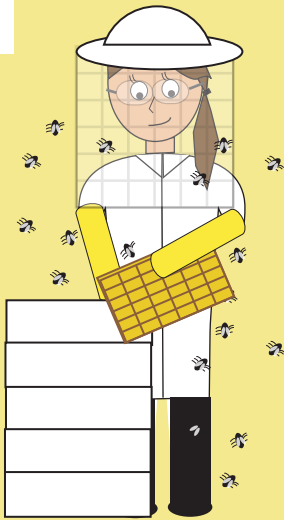
Construct hives & replace combs & build queen rearing operations

Collect & package any hive products including honey, beeswax, and pollen

Identify & report hive health concerns

JOB OUTLOOK

POOR FAIR GOOD GREAT EXCELLENT



EDUCATION NEEDED

High school diploma required; may consider Associate's / Bachelor's in entomology or biology or pursue extension courses

RECOMMENDED H.S. COURSES

Ag education, biology, mathematics, natural resources, horticulture, Spanish

TYPICAL EMPLOYERS

Large honey producers, smaller apiaries, or you may be self-employed

Beef Farm Worker

JOB OVERVIEW

Assist in the daily operations of a beef farm including feeding, breeding, and calving

Identify sick animals & determine proper treatment or contact veterinarian

Assist in breeding programs such as artificial insemination & synchronization

Transport cattle to market

Assist in branding & tagging of calves

JOB OUTLOOK

POOR FAIR GOOD GREAT EXCELLENT



EDUCATION NEEDED

High school diploma required; Associate's degree in animal science or husbandry beneficial

RECOMMENDED H.S. COURSES

Ag education, animal science, biology, chemistry, business, mathematics

TYPICAL EMPLOYERS

Varying sizes of beef farms & producers, feedlots, ranches, or you may be self-employed

Dairy Farm Worker

JOB OVERVIEW

Milk, calve, feed & breed dairy cattle

Identify sick animals & determine proper treatment or contact veterinarian

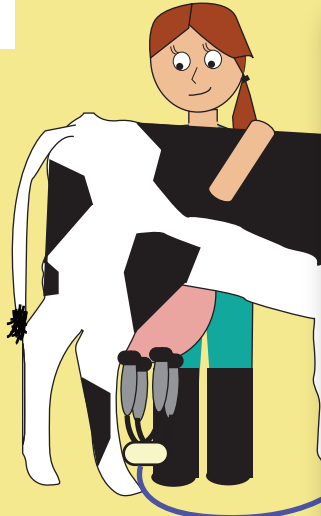
Assist in branding & tagging of calves

Ensure milk quality & safety is never compromised

Clean & maintain milking equipment

JOB OUTLOOK

POOR FAIR GOOD GREAT EXCELLENT



EDUCATION NEEDED

High school diploma; Associate's or Bachelor's in dairy science, animal science, or animal husbandry would be beneficial

RECOMMENDED H.S. COURSES

Ag education, animal science, biology, chemistry, business, mathematics

TYPICAL EMPLOYERS

Varying sizes of dairy farms & operations, may be self-employed

Poultry Farm Worker

JOB OVERVIEW

Assist in daily operations of a poultry farm including checking birds, collecting eggs & feeding

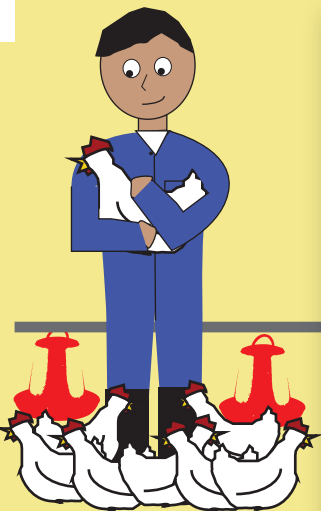
Check for sick or injured birds during walk-throughs

Control temperature & ensure access to food & water for ultimate bird comfort

Utilize proper biosecurity standards when entering & exiting barns

JOB OUTLOOK

POOR FAIR GOOD GREAT EXCELLENT



EDUCATION NEEDED

High school diploma; Associate's or Bachelor's in poultry science, animal science, or animal husbandry would be beneficial

RECOMMENDED H.S. COURSES

Ag education, animal science, biology, chemistry, business, mathematics

TYPICAL EMPLOYERS

Poultry farms (usually contracted by retailer), may be self-employed

Small Ruminant Farm Worker

JOB OVERVIEW

Care for sheep & goats raised for meat, wool, or dairy production

Identify sick animals & determine proper treatment or contact veterinarian

Assist in castration and lambing or kidding, as well as regularly bottle-feeding rejected lambs or kids

Assist in tagging, milking operations (for goats), sheep shearing, and breeding programs like artificial insemination

JOB OUTLOOK

POOR FAIR GOOD GREAT EXCELLENT



EDUCATION NEEDED

High school diploma required; Associate's degree in animal science or husbandry beneficial

RECOMMENDED H.S. COURSES

Ag education, biology, business, animal science, mathematics

TYPICAL EMPLOYERS

Small to large-scale sheep and goat operations & ranches, which may be privately or company-owned

Swine Finishing Farm Manager

JOB OVERVIEW

Oversee the health & growth of pigs in an effective & safe manner

Identify sick animals & determine proper treatment or contact veterinarian

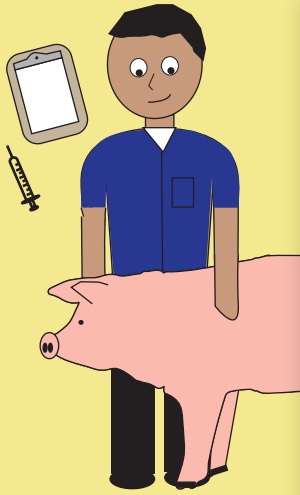
Order & arrange shipments of feed & prepare regular reports

Monitor ventilation & water availability in all barns

Utilize proper biosecurity standards when entering & exiting barns

JOB OUTLOOK

POOR FAIR GOOD GREAT EXCELLENT



EDUCATION NEEDED

High school diploma required; Associate's degree in swine management, animal science or husbandry beneficial

RECOMMENDED H.S. COURSES

Ag education, biology, business, animal science, mathematics

TYPICAL EMPLOYERS

Swine production farms that house & produce swine for processing

PROFESSIONALS IN ANIMAL PRODUCTION CAN EXPECT TO EARN

AN AVERAGE OF \$30,700 PER YEAR